

STANDARD ARRIVAL
CHART - INSTRUMENT
(STAR) - ICAO

TRANSITION ALTITUDE
10000 FT

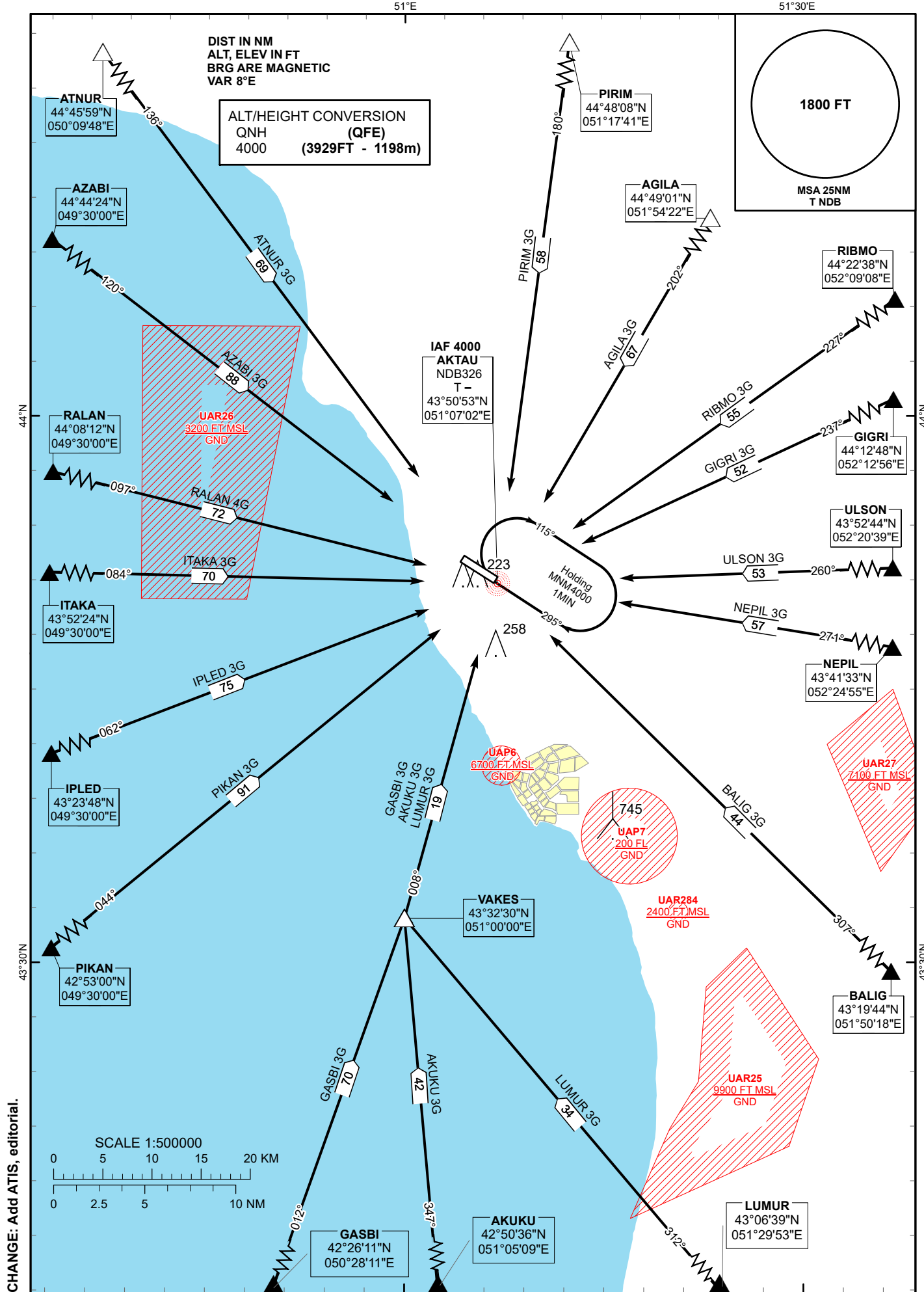
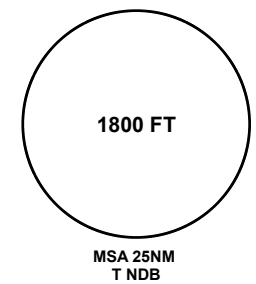
AKTAU TOWER 120.7
AKTAU ATIS (EN) 130.1
AKTAU ATIS (RU) 126.2

AGILA 3G AKUKU 3G ATNUR 3G AZABI 3G
BALIG 3G GASBI 3G GIGRI 3G IPLED 3G
ITAKA 3G LUMUR 3G NEPIL 3G PIKAN 3G
PIRIM 3G RALAN 4G RIBMO 3G ULSON 3G

AKTAU
RWY 11

DIST IN NM
ALT, ELEV IN FT
BRG ARE MAGNETIC
VAR 8°E

ALT/HEIGHT CONVERSION
QNH (QFE)
4000 (3929FT - 1198m)



CHANGE: Add ATIS, editorial.

STANDARD ARRIVAL ROUTES – INSTRUMENT (STAR) AKTAU RWY 11	
PIRIM 3G After crossing PIRIM (N444808 E0511741) proceed on track 180° to T. Crossing FL at PIRIM are by ATC. Cross NDB T at 4000.	AKUKU 3G After crossing AKUKU (N425036 E0510509) proceed on track 347° to VAKES (N433230 E0510000). After crossing VAKES proceed on track 008° to T. Crossing FL at AKUKU are by ATC. Cross NDB T at 4000.
AGILA 3G After crossing AGILA (N444901 E0515422) proceed on track 202° to T. Crossing FL at AGILA are by ATC. Cross NDB T at 4000.	GASBI 3G After crossing GASBI (N422611 E0502811) proceed on track 012° to VAKES (N433230 E0510000). After crossing VAKES proceed on track 008° to T. Crossing FL at GASBI are by ATC. Cross NDB T at 4000.
RIBMO 3G After crossing RIBMO (N442238 E0520908) proceed on track 227° to T. Crossing FL at RIBMO are by ATC. Cross NDB T at 4000.	PIKAN 3G After crossing PIKAN (N425300 E0493000) proceed on track 044° to T. Crossing FL at PIKAN are by ATC. Cross NDB T at 4000.
GIGRI 3G After crossing GIGRI (N441248 E0521256) proceed on track 237° to T. Crossing FL at GIGRI are by ATC. Cross NDB T at 4000.	IPLD 3G After crossing IPLD (N432348 E0493000) proceed on track 062° to T. Crossing FL at IPLD are by ATC. Cross NDB T at 4000.
ULSON 3G After crossing ULSON (N435244 E0522039) proceed on track 260° to T. Crossing FL at ULSON are by ATC. Cross NDB T at 4000.	ITAKA 3G After crossing ITAKA (N435224 E0493000) proceed on track 084° to T. Crossing FL at ITAKA are by ATC. Cross NDB T at 4000.
NEPIL 3G After crossing NEPIL (N434133 E0522455) proceed on track 271° to T. Crossing FL at NEPIL are by ATC. Cross NDB T at 4000.	RALAN 4G After crossing RALAN (N440812 E0493000) proceed on track 097° to T. Crossing FL at RALAN are by ATC. Cross NDB T at 4000.
BALIG 3G After crossing BALIG (N431944 E0515018) proceed on track 307° to T. Crossing FL at BALIG are by ATC. Cross NDB T at 4000.	AZABI 3G After crossing AZABI (N444424 E0493000) proceed on track 120° to T. Crossing FL at AZABI are by ATC. Cross NDB T at 4000.
LUMUR 3G After crossing LUMUR (N430639 E0512953) proceed on track 312° to VAKES (N433230 E0510000). After crossing VAKES proceed on track 008° to T. Crossing FL at LUMUR are by ATC. Cross NDB T at 4000.	ATNUR 3G After crossing ATNUR (N444559 E0500948) proceed on track 136° to T. Crossing FL at ATNUR are by ATC. Cross NDB T at 4000.